



1863 Eastman Ave., Ventura, CA 93003 Ph: (800) 826-3045 Fax: (805) 650-0742
ronf@arpfasteners.com
www.arp-bolts.com

Please fill out, completely, the stud/bolt calculation sheet(s) accompanying this fax/email. We need a separate sheet completed for each size and length of stud or bolt that you need. Take all measurements from the block and head. **DO NOT** take any measurements from any existing studs or bolts. Fax or email the sheets back to us. This information allows us to calculate the exact stud or bolt for your needs. We will first compare your needs with our stock parts inventory. If there is no match with our stock parts then we can design a custom fastener for you using this information. If you have any questions please contact me using the information above.

Thank you for contacting ARP.

Ron F.

Email _____

Customer Name _____

Phone/Fax # _____

Block Mfgr & Model _____

Material _____

Year(s): _____

Head Mfgr & Model _____

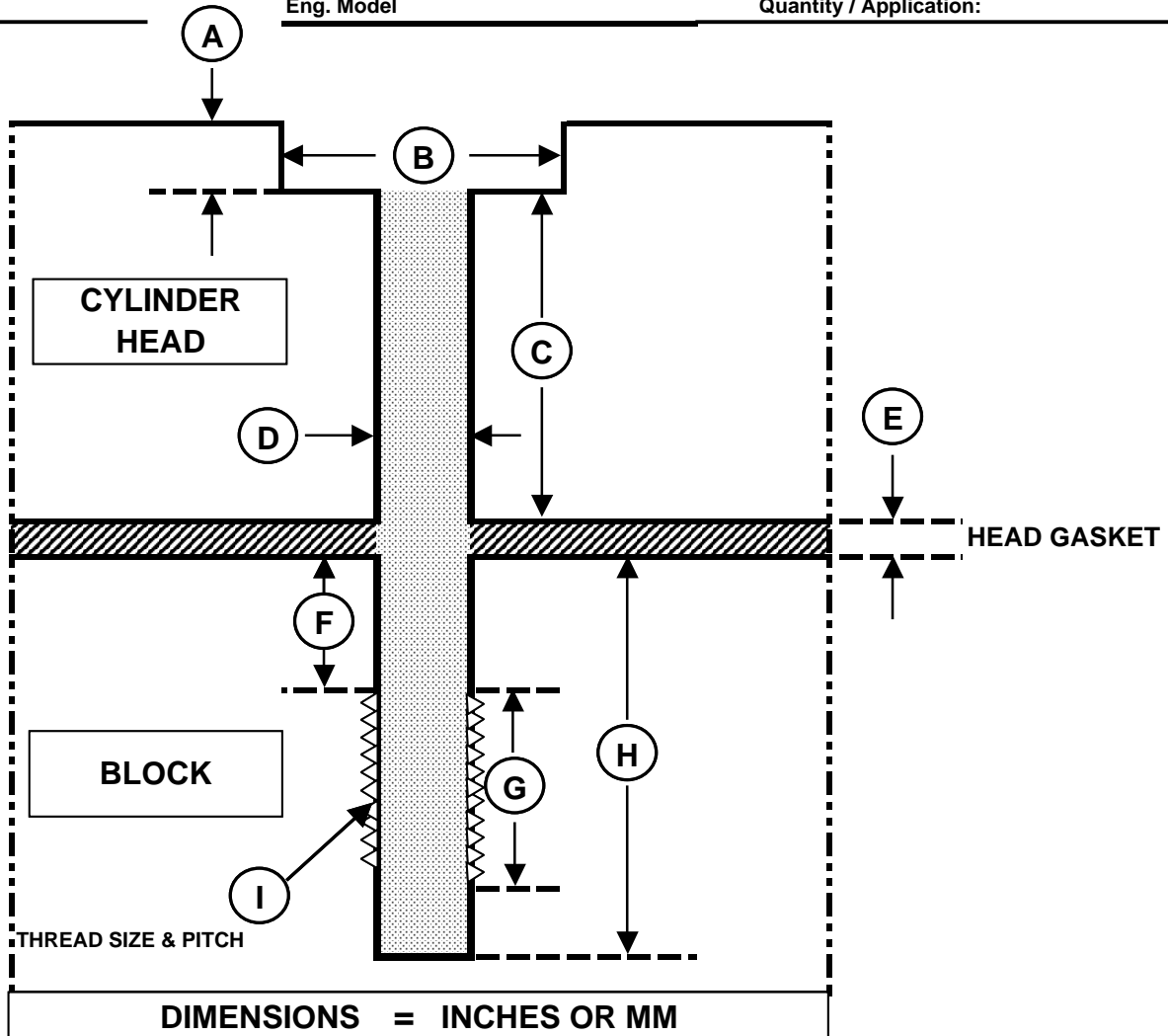
Material _____

Year(s): _____

Date: _____

Eng. Model _____

Quantity / Application: _____



DIMENSIONS = INCHES OR MM

Depth of head counter bore. **(A)** = _____

Diameter of head counter bore. **(B)** = _____

Thickness of head from bottom of counter bore to bottom of head. **(C)** = _____

Diameter of bolt/stud hole in head. **(D)** = _____

Head gasket thickness. **(E)** = _____

Depth of counter bore in block. **(F)** = _____

Length of thread in block. **(G)** = _____

Depth of bolt/stud hole from block surface to bottom of hole. **(H)** = _____

Thread size and pitch. **(I)** = _____

**ARP - MAIN STUD & BOLT
CALCULATION SHEET**

ARP TECH

Ron F.

Email

Customer Name

Phone/Fax #

Block Mfgr & Model

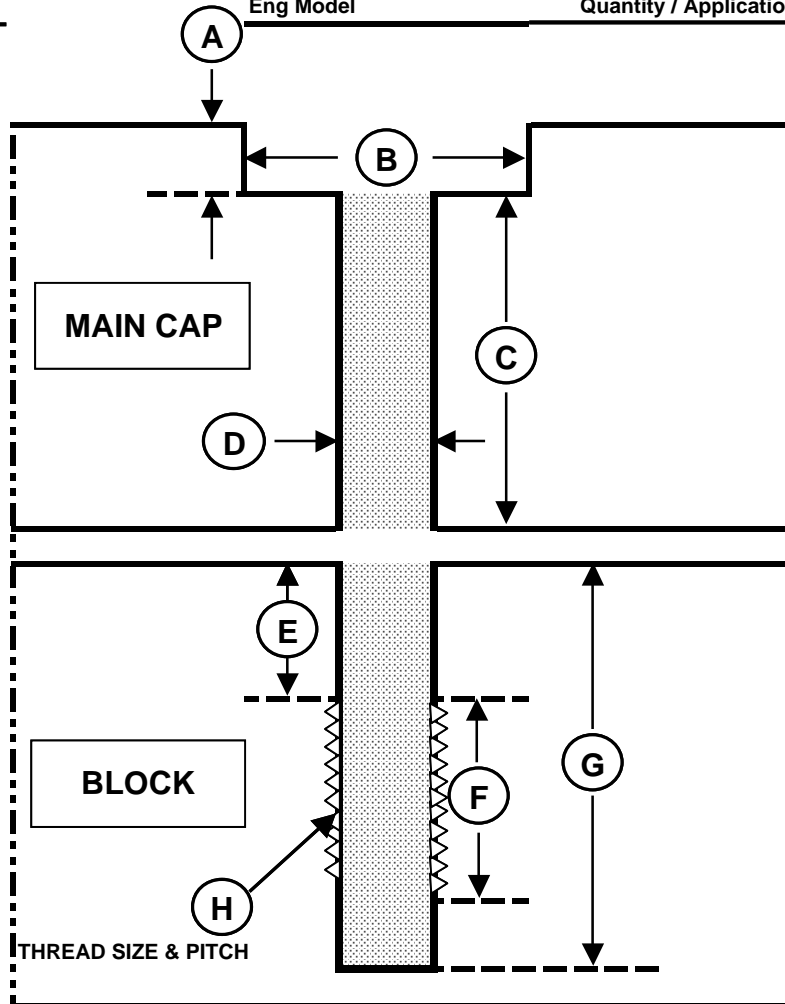
Material

Year(s):

Date:

Eng Model

Quantity / Application:



DIMENSIONS = INCHES OR MM

Depth of cap counter bore.

(A) =

Diameter of cap counter bore.

(B) =

Thickness of cap from bottom of counter bore to bottom of cap.

(C) =

Diameter of bolt/stud hole in cap.

(D) =

Depth of counter bore in block.

(E) =

Length of thread in block.

(F) =

Depth of bolt/stud hole from block surface to bottom of hole.

(G) =

Thread size and pitch.

(H) =